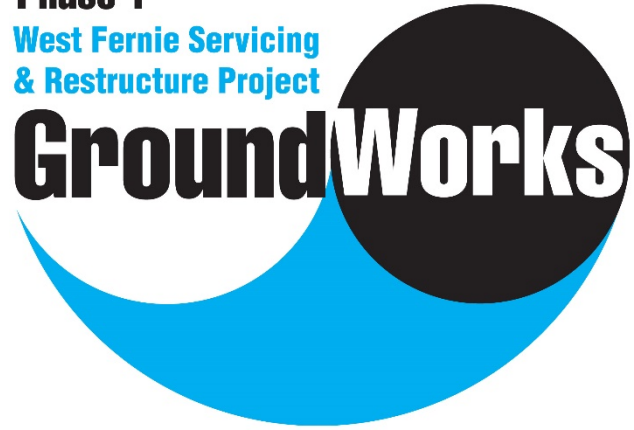




Phase 1

**West Fernie Servicing
& Restructure Project**

GroundWorks



Public Information Session

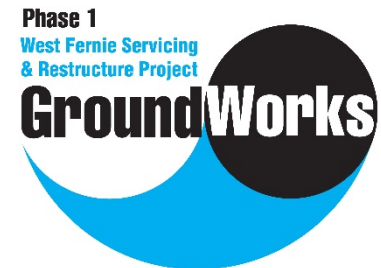
March 31, 2016

Housekeeping Items

- Fire exits
- Washrooms
- Coffee, tea and water
- Purpose of the session
- Format for the session

Team Members

- RDEK
- City of Fernie
- Regulatory Stakeholders
- KWL/MPE
- Dawson Construction Limited
- Align Survey
- Groundtech



Key Contacts

RDEK

Elizabeth Ahlgren

eahlgren@rdek.bc.ca

250-489-2791

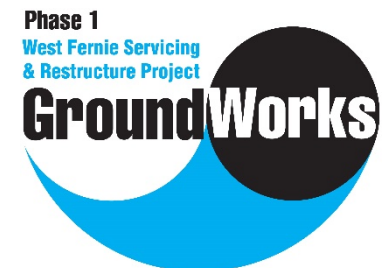
888-478-7335

KWL

Don Nash

dnash@kwl.ca

250-777-3800



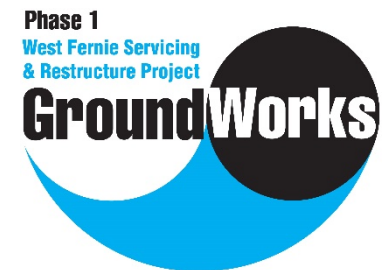
Key Contacts

Dawson Construction

Brook Webster

info@dawcon.com

250-374-3657



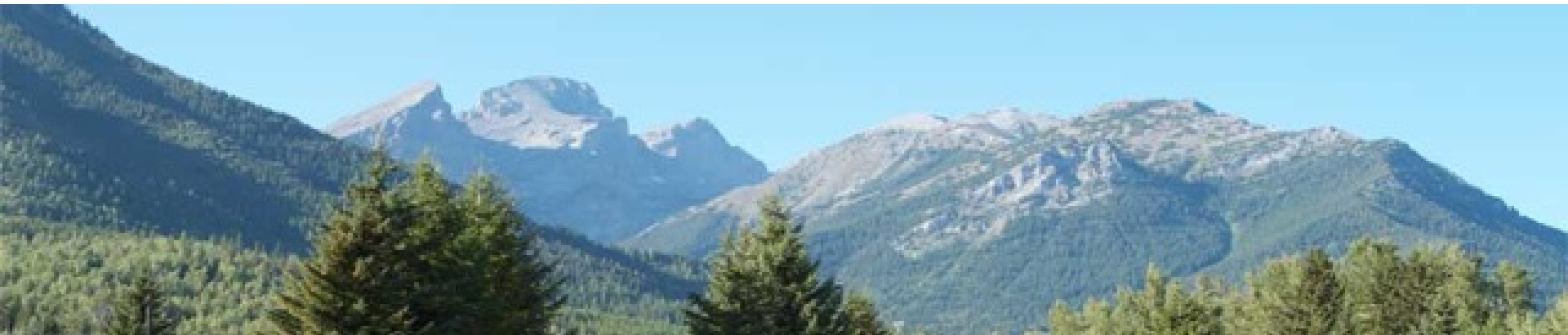
Project Information

- WestFernie.ca
- Newsletters
- West Fernie Servicing Document
- Email (sign up at lduczek@rdek.bc.ca)
- Local Media Ads
- Email or call Elizabeth (eahlgren@rdek.bc.ca / 250-489-2791)
Email or call Don (dnash@kwl.ca / 250-777-3800)

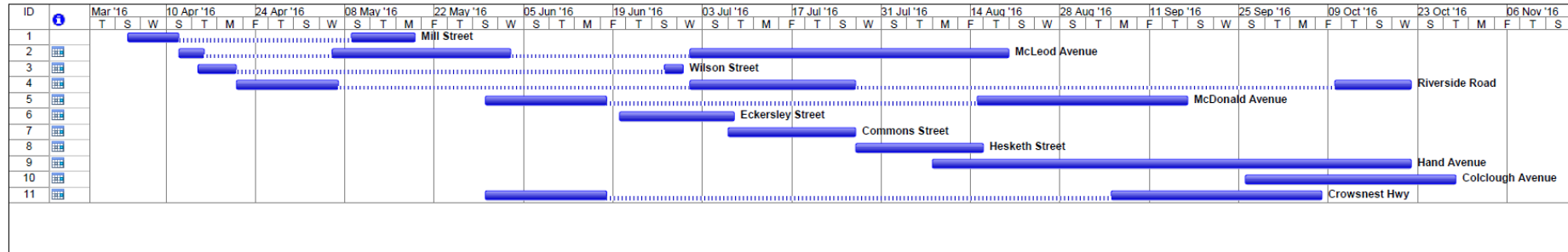


Detailed Design Review

- Detailed Design Drawings are on WestFernie.ca

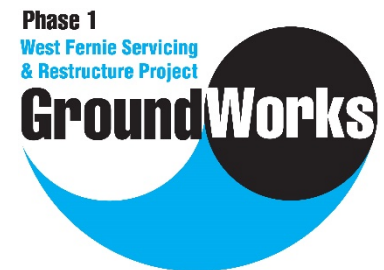


Project Timelines: High-Level Schedule



Common Questions

- When can I connect?
- Who can complete the service connections and what are the rough costs?
- What do I do with my old septic system?
- Will there be clean surplus fill available?
- If I want additional service connections what is the process and how much will it cost?



Group Questions



Individual Questions

Thank you for participating!

